



++  
++  
++  
++

# Annual Report 2024



++  
++  
++  
++

**Portage Parks  
& Recreation  
Department**

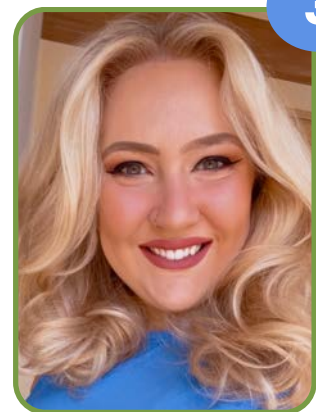
---

# Table Of

# Contents

- 1** Meet Our Team
  - 2** Vision & Mission
  - 3** Parks
  - 8** Recreation
  - 13** Forestry
  - 15** Administration
  - 16** Sponsorship
  - 20** Budget
-

# Our Team



01. Toby Monogue - Department Manager

02. Mike Percy - Recreation Coordinator

03. Hayley Wolfe - Recreation Assistant

04. Mark Fahey - Crew Person

05. Justin Brown - Crew Person

# Vision & Mission

## Vision

The Portage Park and Recreation Department's Vision is to enrich the community by providing affordable, diverse recreational opportunities to encourage physical fitness and mental health while building community bonds and enhancing the quality of life by providing safe, welcoming parks and recreational facilities. Community through people, parks, and programs.

## Mission

The Portage Park and Recreation department aims to provide and maintain a beautiful and accessible park system, quality and affordable recreation programs, and restore and maintain city forestry. We strive to serve the community and provide options that will benefit the lives of those in the Portage Community.



# Parks

## Improvement Projects

### Pocket Park

- Downtown, intersection of Dewitt St. and Wisconsin St.



### Pine Meadow Park

- New playground equipment
- Accessible path around playground



# Parks

## Improvement Projects

### Goodyear Park

- Fencing added
- Sidewalk added
- Shade Structure



### 33 Wayside

- Canoe/Kayak Launch
- Sidewalk added



# Parks

## Shelter Rentals

Location	# of Rentals
Collipp- Worden #1	39
Pauquette #1	29
Sunset	29
Collipp-Worden #2	13
Pauquette #2	12
Silver Lake	16
Beasley Pavillion	18
Goodyear	7
Riverside	1
Pine Meadow	3
Woodridge	0
Sanborn	0
Pauquette Gazebo	7



Resident Rentals:  
**136**  
Non-Resident  
Rentals:  
**38**



### Tier 1 Shelters

M-F \$45 R/\$70 NR  
Sat/Sun \$55 R/\$80 NR

### Tier 2 Shelters

M-F \$35 R/\$60 NR  
Sat/Sun \$45 R/ \$70 NR

### Tier 3 Shelters

M-F \$25 R/ \$50 NR  
Sat/Sun \$35 R/\$60 NR



# Winter Storage @ Fairgrounds



Total Items Stored: **85**  
**50** Resident / **35** Non-Resident  
Total: \$34,845.02

Secured Building: (Locked, indoor space)...\$15R/\$20NR per foot

Un-Secured Building: (Open air shelter w/roof,  
not locked)...\$7R/\$8NR per foot

Late Oct - Early April





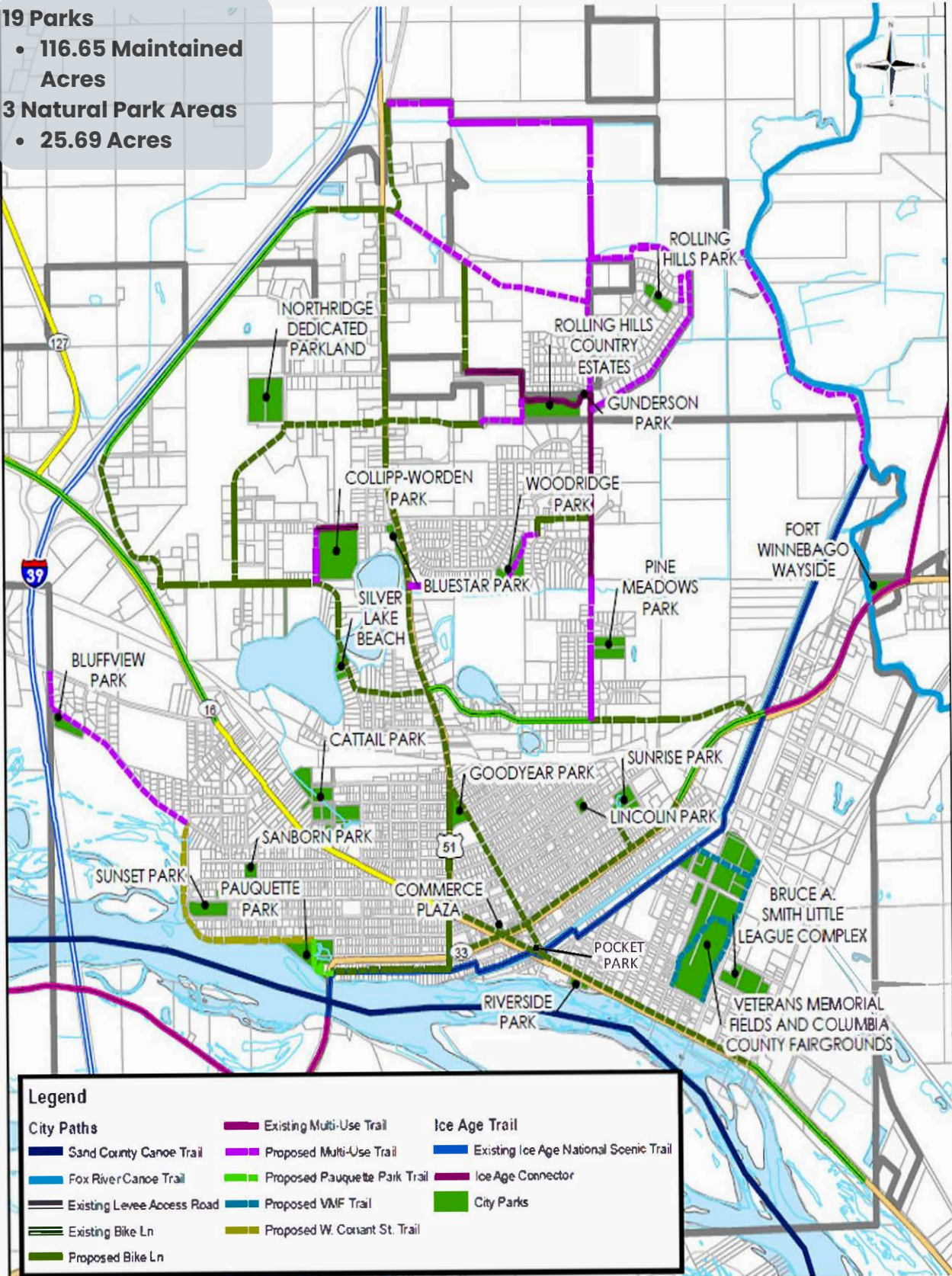
# Park Map

## 19 Parks

- 116.65 Maintained Acres

## 3 Natural Park Areas

- 25.69 Acres



# Recreation

## Top 5 Most Popular Recreation Programs

Playground Program

Dance

Karate

Cheerleading

Volleyball

## New Programs

PHS Volleyball Camp

PHS Track/CC Camp



1477

Recreation Participants

25

Programs Offered

100

Total # of classes



# Recreation

Program	# of Classes	# of Participants
Tot Basketball	3	48
Karate	18	245
PHS Curling Camp	1	10
PHS Tennis Camp	3	60
Safe Sitter Essentials	10	32
Dance Program	16	197
Tot T-Ball	3	55
Tot Soccer	3	62
Baseball Skills Camp	1	14
PHS Baseball Camp	1	29
PHS Girls Basketball Camp	2	48
Playground Program	1	75
Warrior Crafts	1	31
Discover Drums	4	4
Flag Football - Spring	2	42
Flag Football - Fall	2	51
Summer Dance Program	3	43
Summer Cheerleading	4	105
Competitive Cheerleading	1	26
Tennis	12	52
Summer PHS Cheer Camp	1	71
Winter PHS Cheer Camp	1	31
Instructional Soccer	2	36
PHS Track/CC Camp	2	35
PHS Volleyball Camp	3	73



# Recreation

## Adult Softball

- 4 teams, 50+ players
- 10-week season (May-August), plus Playoffs

## Adult Volleyball

- 10 teams, 80+ players
- 14-week season (November-February) plus end of the season tournament

## Open Gyms

- Offered Sunday mornings (9am-Noon) and Monday evenings (7-9pm), November through February
- 467 users in 2024
- Free to attend

## Pickleball

- Averaged 50+ players each week, May through September









# Special Events

- Truck or Treat
- National Night Out
- Letters From Santa
- Concerts In The Park
- Bucks Game
- Brewers Game





# Forestry

- Tree City USA for 30th year.
  - Received Growth Award
- In 2024 the City of Portage removed 44 trees and planted 92 new trees. Noteworthy planting locations included:
  - 40 trees along E. Conant street
  - 15 trees along W. Conant Street
  - 33 new park trees located at Collipp Worden, Blue Star, Gunderson, 33 wayside, Little League Complex, Pauquette, and Sunset parks.



92

Trees Planted

44

Trees Removed

500

Trees Pruned

# Forestry

## ARBOR DAY CELEBRATION

On April 23rd, 2024, City staff worked with 4 volunteers from Kruger Family Industries to plant 40 trees for our Arbor Day celebration. The planting event took place on both sides of E. Conant Street where volunteers helped dig holes, water, stake, and mulch trees.



# Administration

## Staff Breakdown

- 5 Full Time Park & Rec Staff
- 1 50% Time Rec Office Staff
- 3 Summer/Seasonal Mowers
- 2 Summer/Seasonal Weed Harvesters
- 1 Summer/Seasonal Maintenance
- 55 Rec Program Staff
- 13 Lifeguards
- 4 Northwoods Staff



605 Wisconsin Park  
& Recreation  
Association  
Discount Tickets  
Sold



# Sponsorship

As a sponsor of the Park and Recreation Department you have several opportunities for advertisement:

## YOUTH PROGRAMS

You choose which of our youth programs you would like to sponsor and your business logo will be included on the T-shirts for the participants to wear and keep. Sponsorship dollars will go towards program equipment and supplies. All Youth Sponsors will receive a t-shirt from the program they sponsor (optional).

## BALL FIELD BANNERS

These 9 x4 ft. banners hang along the outfield fences of the Veterans Memorial Field ball diamonds and will be seen by players and families participating in multiple programs from Adult Softball to Youth Sports and fairground events, April-October.

## SPONSOR COMBO

Be the ultimate sponsor! Combine a Youth Program Sponsor with a Ball Field Banner in one sponsorship, at a reduced rate. BONUS: Each year you return your sponsorship combo is discounted.



# 2024 Sponsors

*Thank  
you!*

American Family Insurance- Riley Kubatzke  
American Family Insurance- Sheila Link  
Bremner Granite  
Cardinal Glass  
Craig's Popcorn Corner LLC  
Culvers  
Electric 1  
Galley Studios  
General Engineering  
Hair Sensations  
Hart & Olson Family Dentistry  
Hillestad Heating  
Johnson Chiropractic  
Kiwanis Club of Portage  
MachineLab Fitness  
Pflanz, Mantey, Mendrala Funeral Homes  
Portage Automotive Center  
Portage Elks Club  
Portage Furniture Store  
WCCU (Westby Co-Op Credit Union)

Zimmerman Plumbing  
Allstate- Shelly Cibulka  
Arbor Green  
Blau Chiropractic  
Cascade Mountain  
Collectors Choice Coins & Collectables  
Community Bank of Portage (BWD)  
Cordell's Automotive  
Country Plumber  
Crawford Oil  
Edward Jones- Klay Vehring  
Forever Yours Jewelry  
Grande Cheese Company  
Gumz Farms  
Knight Barry Title Service  
Kruger Family Industries  
Lynn Holdings  
McReath Orthodontics  
Meigs Transport  
Midwest Dental  
Natures Way Landscaping  
Portage CrossFit Cooperative  
Portage Lions Club  
Roth Professional Solutions  
Seubert Family Dentistry  
Terrytown Plumbing  
VFW Post 1707  
Wieser Concrete  
Wisconsin River Title Consultants  
Women's Civic League of Portage  
Portage Rotary Club  
Portage State Bank  
Rhyme  
Saint Gobain  
Sean Malone- State Farm Insurance  
Smiley Law Office  
Summit Credit Union  
TRICOR LLC- Don Rick Insurance

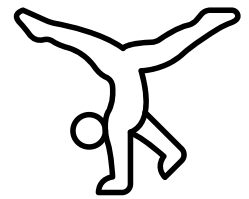




---

# 2024 Grants & Donations

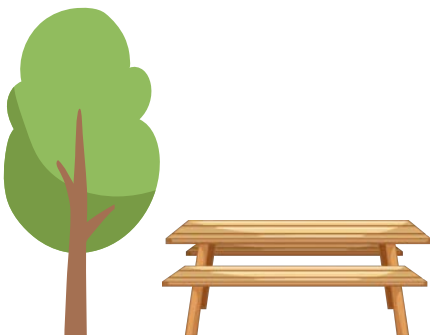
## Grants



Lenz Trust | \$5,000 | Tumbling Equipment  
WEDC Grant | \$50,000 | Pocket Park

## Donations

Krueger Family Industries | \$500 | Trees  
Elks Club | \$1600 | Trees  
VFW | \$100 | Flags  
PSCA | \$2917 | Picnic Tables  
Women's Civic League | \$400 | Trees



# 2024 Grants & Donations

## Canoe/Kayak Launch

This all-accessible canoe and kayak launch was constructed in 2024 and is a testament to the collaborative efforts of the Portage Service Club Association, Portage Park & Recreation, City of Portage, General Engineering Company, Portage Area Chamber of Commerce, and the Wisconsin Department of Natural Resources, with generous matching funding provided through the Recreational Boating Facilities Grant.



### Platinum \$5,000+

Wisconsin Department of Natural Resources  
Edward C. Lenz and June M. Lenz Charitable Trust  
Enbridge  
Alliant Energy



### Gold \$2500-\$4999

Rotary Club of Portage



### Silver \$1000 - \$2499

Portage Elks Lodge #675  
Pat and Michele Hartley



### Bronze \$250-\$999

Optimist Club of Portage  
American Legion Post #47  
Community Bank of Portage





# Budget

<b>Park and Rec Summary</b>		
<b>Revenues</b>	<b>2024 Budget</b>	<b>2024 Actual</b>
Department Revenues	142,324	135,323
Revenues Taxes	675,899	656,533
<b>Total Revenues</b>	<b>818,223</b>	<b>791,856</b>
<b>Expenditures</b>		
Administration	234,588	225,851
Recreation	108,202	100,852
Park Maintenance	475,432	465,153
<b>Total Expenditures</b>	<b>818,223</b>	<b>791,856</b>
<b>NET Revenue Over Expenditures</b>	<b>(675,898)</b>	<b>(656,533)</b>

# Contact Us



608-742-2178



[facebook.com/portageparknrec](https://facebook.com/portageparknrec)



[portage.recdesk.com](https://portage.recdesk.com)



401 Cemetery Rd, Portage, WI 53901

# Thank You

Thank you to the Portage community for your continued support. We look forward to improving the quality of the parks and recreation opportunities in 2025!